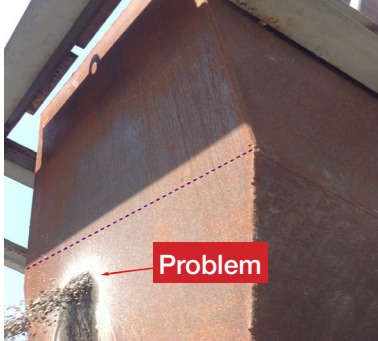
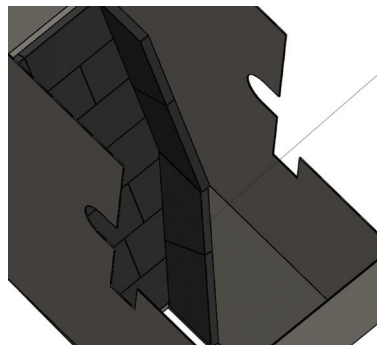


Rubber/Ceramic Matrix Chute Liners



Application: Aggregates 3" minus granite.
BEFORE: Ceramic liner proved too brittle and material destroyed the liner and the metal chute wall. Replacement required hanging in plates, boom trucks, torches and welders.

Recommendation: Custom fit 12"x12" magnetic Rock Plate™ chute liners. Ceramic molded into rubber provides abrasion and impact resistance.



Result: Easier and safer installation, only worn pieces need replaced. Scheduling maintenance is simplified. Photo shown after three weeks run time.

(800) 237-6951

f: (304) 525-8018



Proven Solutions. Expert Advice.

richwood.com

e: info@richwood.com