

RockPlate™ Chute Liners

Application:

Material - 6" minus Granite with some larger slabs

Tonnage- 600-800 tons/hour

Height of fall - 2' to 6'

Previously used 1" thick AR Plate which only lasted 3-4 months.

The AR plate required extensive amounts of cutting and welding to install and repair.



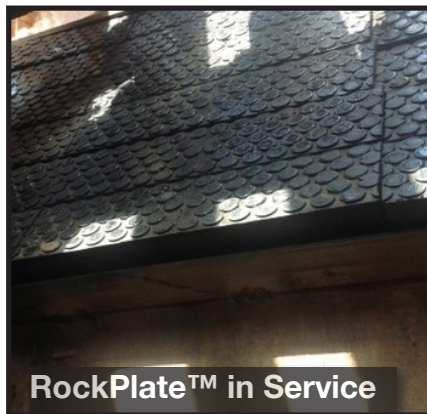
Before- AR Plate replaced every 3-4 months

Solution:

Client Installed Rockplate™ wear liners that are 2 1/2" thick x 6" high x 24" wide.

The Rockplate™ wear liners were in service for four years before being replaced with new ones.

Rockplate™ eliminates common installation issues- They are bolt-on or magnetic backed for simple installation and replacement.



RockPlate™ in Service



Benefits:

Protects chute from wear.

Reduced noise and dust levels.

Easy to install and replace.



After Four Years of Service

For assistance with your application, call Richwood (304) 525-5436.

(800) 237-6951

f: (304) 525-8018



Proven Solutions. Expert Advice.

richwood.com

e: info@richwood.com

©Richwood 2019